



Buddy Icon Grabber Manual

| | | |
|----|-------|--------------------------------|
| 1 | ----- | Index |
| 2 | ----- | Brief Introduction |
| 3 | ----- | Main Features |
| 5 | ----- | System Requirement |
| 6 | ----- | Installation / Un-installation |
| 7 | ----- | How to Import Icons |
| 8 | ----- | Icons Import Options |
| 9 | ----- | View Styles |
| 11 | ----- | Save Icons |
| 13 | ----- | Result Report |
| 14 | ----- | Main Menu |
| 16 | ----- | Main Buttons |
| 17 | ----- | Hotkeys |
| 18 | ----- | Purchase & Register |
| 19 | ----- | Developer Information |
| 20 | ----- | Support Center |
| 21 | ----- | Feedback |



Brief Introduction

Buddy Icon Grabber is designed to extract high-quality icons from application files (exe, dll), icon files (ico), and icon list files (icl) and save to ico, bmp, jpg files without color disortion.













Buddy Icon Grabber can import all icons from an exe, dll, ico, or icl files. And it can also search all icons under a folder. Batch import and export are well supported.

Buddy Icon Grabber can export icons to *.bmp, *.ico, and *.jpg files at the size of 32 x 32 and 16 x 16.








Main Features

Main Features:

-  Import icons from one file;
-  Import icons from one folder;
-  Specify grab icons quantity;
-  Specify icons styles for importing;
-  Specify the image size: 32x32, 16x16, or both;
-  Grab icons from exe, dll, ico, icl files;
-  Three icon view styles: Thumbnail, List, Detail;
-  Nearly no color lost when saving;
-  Save all icons at once;
-  Save icons to ico, bmp, jpg files;
-  Order icons with name, location, or path in Detail View;
-  Detailed Result Report: File path, File list, Image Preview, Open selected file with default viewer.

Other Features:

-  fast;
-  nice and handy interface;
-  no special hardware requirements, no runtime libs needed;
-  life-time technical support;
-  life-time free upgrade;

 **install/uninstall support;**

 **runs well under windows 98/ME/NT/2000/XP**



System Requirement



Microsoft Windows 98



Microsoft Windows ME / NT / 2000



Microsoft Windows XP



Installation and Un-installation



Install Buddy Icon Grabber:

Please follow these steps to install Buddy Icon Grabber on your system:

- Double click icongrabber.exe.
- Follow the instructions in the Install Wizard.



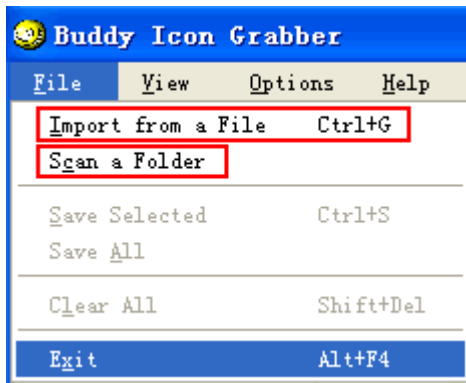
Uninstall Buddy Icon Grabber:

Please follow these steps to remove Buddy Icon Grabber from your system:

- Click 'Start > Program Files > Buddy Icon Grabber' and select 'Uninstall'
- Follow the instructions in the Uninstall Wizard.

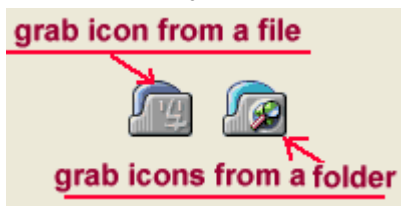


How to Import Icons



Import from a file (Ctrl + G):

You may import icon from a file: *.EXE, *.DLL, *.ICO, *.ICL

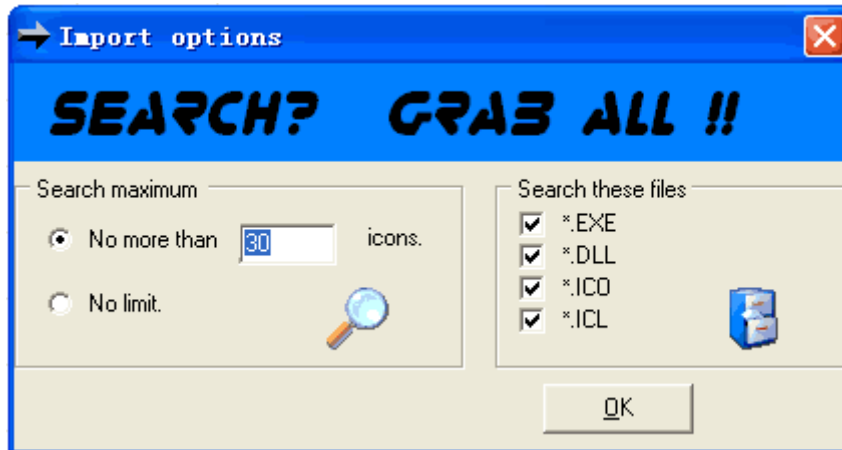


Import from a folder:

You may import icons from a fold.



Import Options



Search Maximum:

You may define the amount of icons for searching.

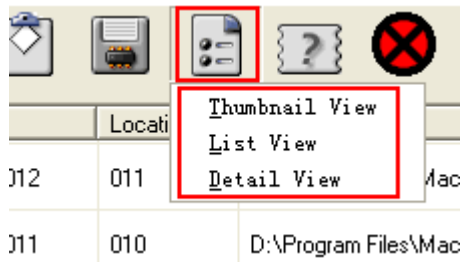


Search these files:

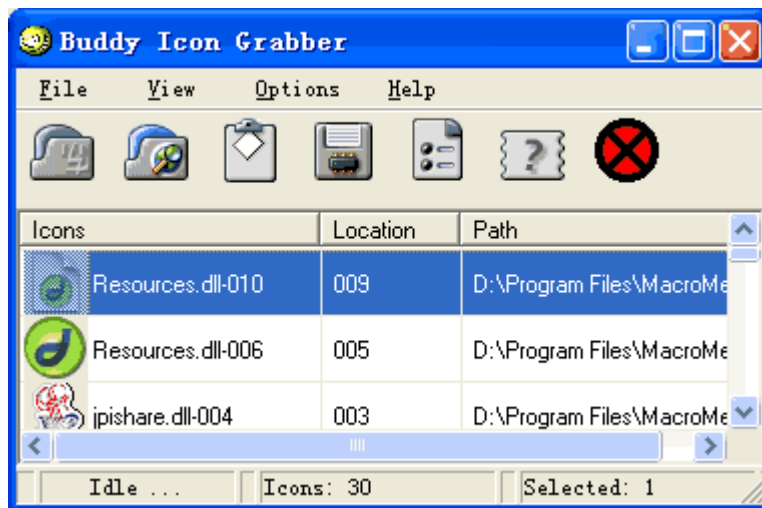
You may define which type files you intend to search.



View Styles



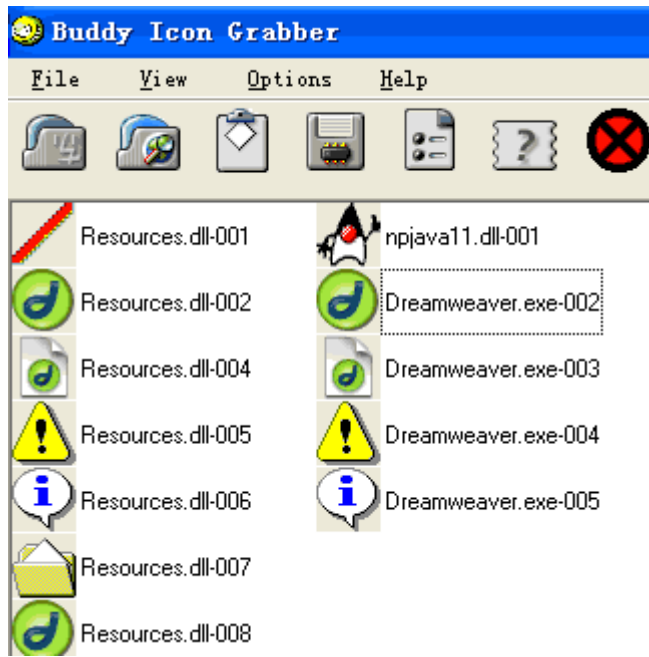
Detail View:



You may order the icons with icons name, icons location, icons path.



List View:



 **Thumbnail View:**

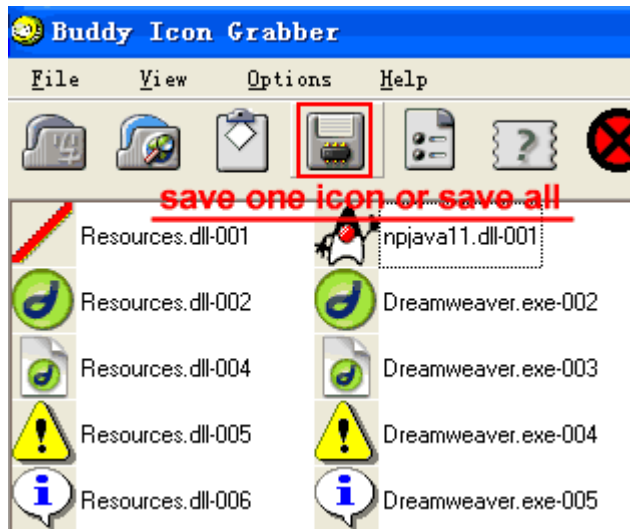




Save Icons



You may save one icon or save all icons you have grabbed.

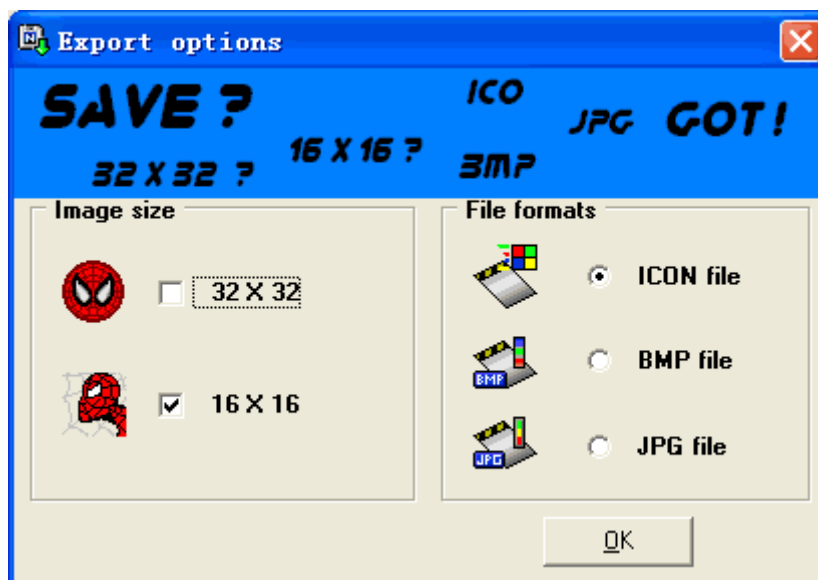


Save one icon: select the icon you want to save and click "save" button or "Ctrl + S".

Save all: select all icons and click "save" button; or click "save all".



Export Options:



Images Size: you may select 32x32, or 16x16, or both.

e.g. If you just want save one icon as go.icon as 32x32 or 16x16 size, you will

get go.icon file.

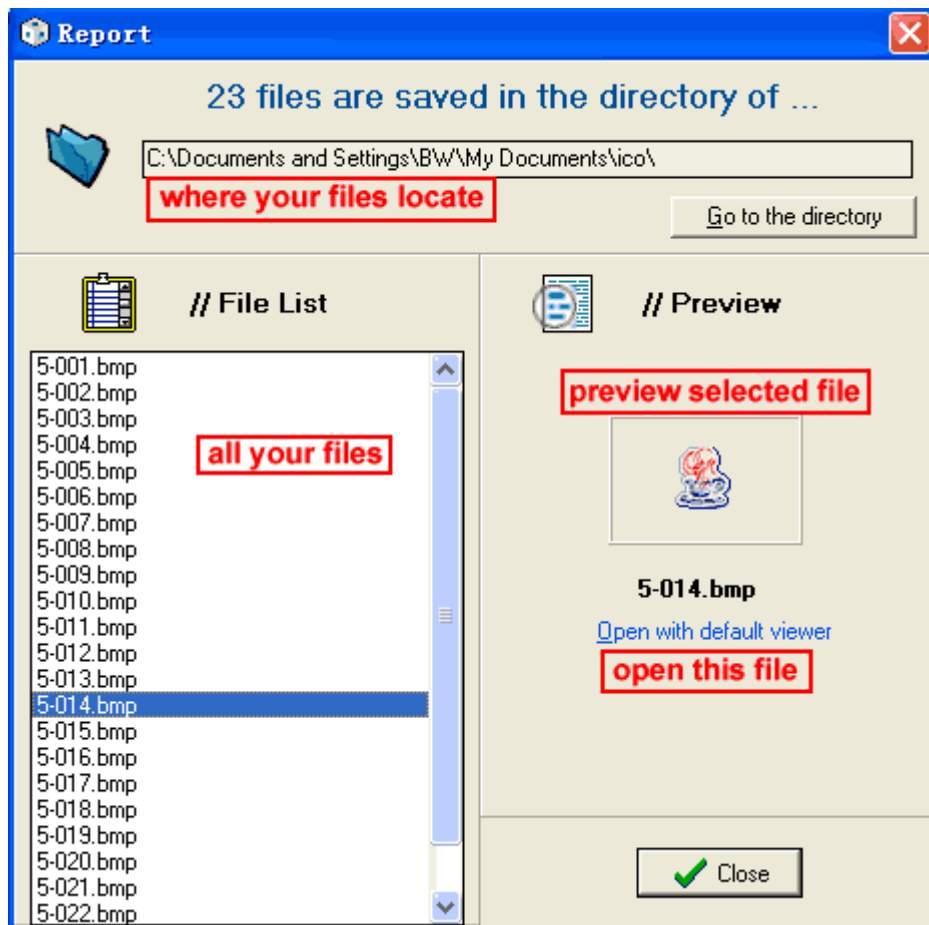
If you want save this icon as go.icon with 32x32 and 16x16 sizes, then you will get 32-go.icon, and 16-go.icon files.


File Formates: you may save icons as icon file, bmp file, or jpg file.


e.g. If you want save one icon as one bmp file, you may select this option, then you will get *.bmp (go.bmp) file.




Result Report



 **Where your files locate:** the path of files. You may open this folder by clicking "Go to the directory".

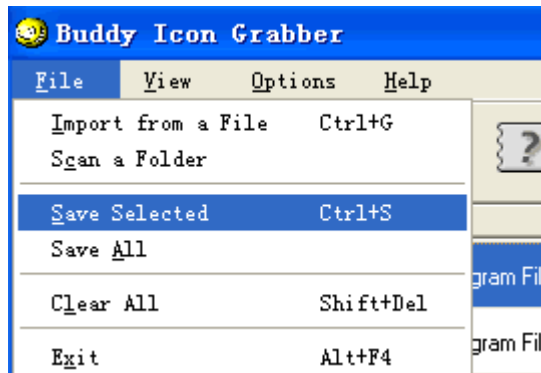
 **File List:** here list all the files in this fold.

 **Preview:** view its image by selecting the file on File List, you also can open it with default viewer by clicking "Open with default viewer" .

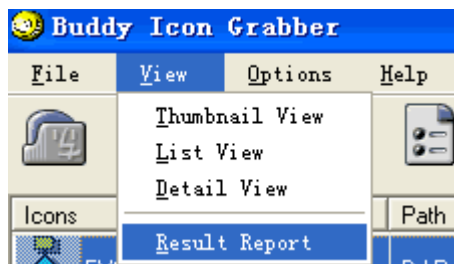


Main Menu

File:



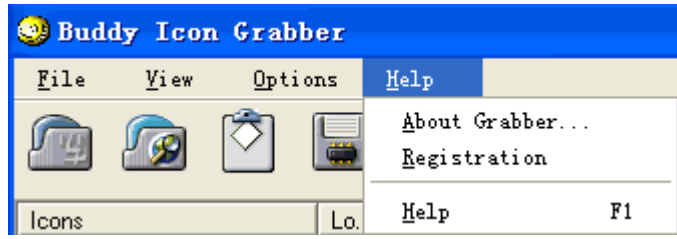
View:



Options:

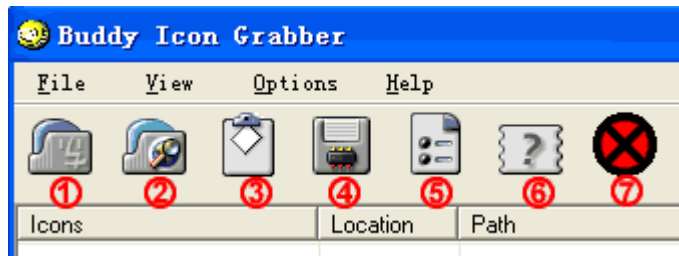


Help:





Main Buttons



1. Grab icons from one file;
2. Grab icons from a folder;
3. Clear all icons;
4. Save icons: save one icon, or save all;
5. Icon view styles: Thumbnail view, List view, Detail view;
6. Help;
7. Exit.



Hotkeys



Import one file: Ctrl + G



Save Selected: Ctrl + S



Clear All: Shift + Del




Help: F1




Exit: Alt + F4



Purchase and Register

 Buddy Icon Grabber is released as shareware. You shall register it if you find it helpful and want to use the full functions.

 Registered users can enjoy *free technical support* and *free updates* from us for a life time.

 Please click the following link to order Buddy Icon Grabber:

[order Buddy Icon Grabber:](#)

<http://www.icongrabber.com-http.com/order.html>

 We'll provide registration code within 24 hours & full-time technical support!



Developer Information

Hanson Z.
Icon Grabber Team
BraveWorld Networks

<http://www.icongrabber.com-http.com>



Contact us:

sales: sales@com-http.com

support: support@com-http.com

marketing: marketing@com-http.com

feedback: info@com-http.com



Technical Support



By purchasing Buddy Icon Grabber, you will receive ongoing, preferred treatment by our technical support team.



Should the need arise, please contact us by dropping an email to support@com-http.com.



Registered users can enjoy free upgrade for a life-time!



Feedback



If you have any comments or concerns about **Buddy Icon Grabber**, please direct them to info@com-http.com.



Your feedback is important for us to get an idea of how to make **Buddy Icon Grabber** a better product for you. Many of the features and significant portions of its interface have been heavily influenced by comments from users. So if you have a grand idea for a new feature, or a better way of doing something, please drop us a line.